

ZWCAD COM Automation Developing Guide

CONTENT

Operating environments	1
Create a project and set properties	1
1. Create a project	1
2. Add reference	1
Sample code	3

Operating environments

CAD platform: ZWCAD

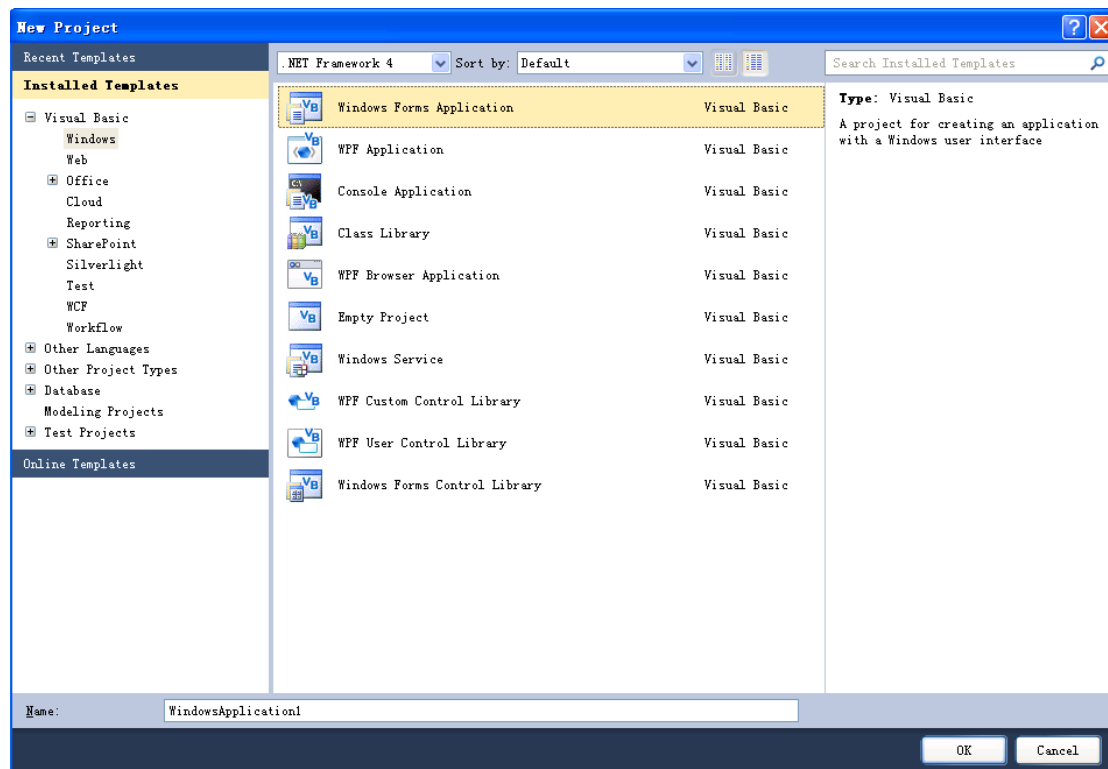
IDE: Visual studio 2010 or later version

Development language: VB.NET or C# etc.

Create a project and set properties

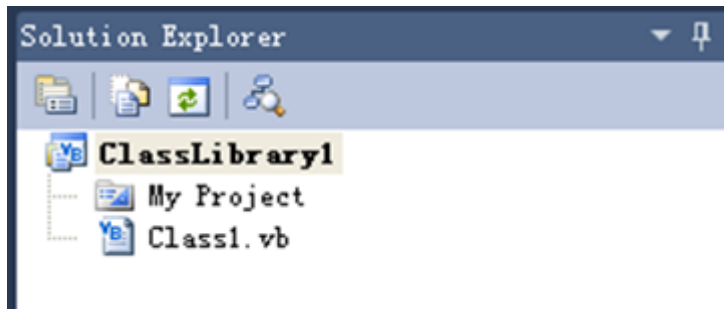
1. Create a project

Start Visual studio (let's take 2010 version for example). Go to menu File, and then select **File-> New Project**. Here you can select **Windows Forms Application** to produce a stand alone .exe file that allows your application to work with ZWCAD.

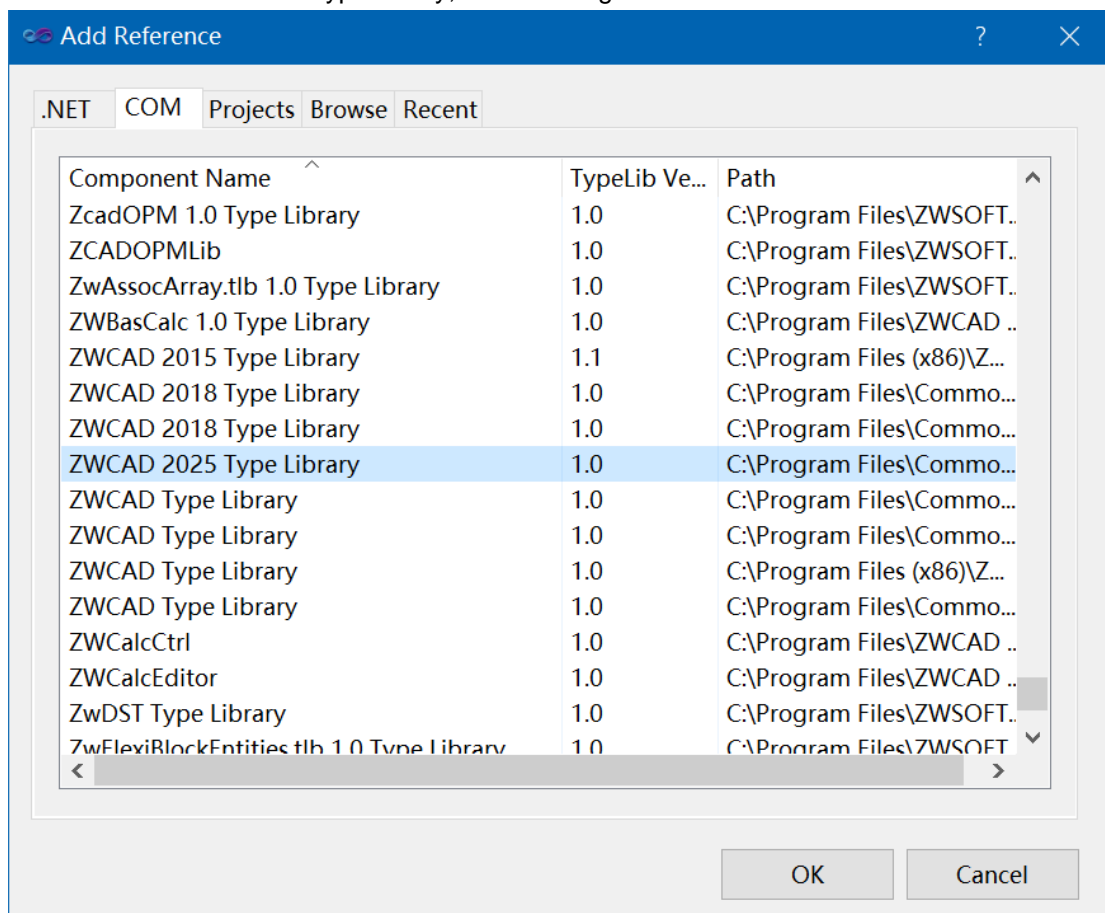


2. Add reference

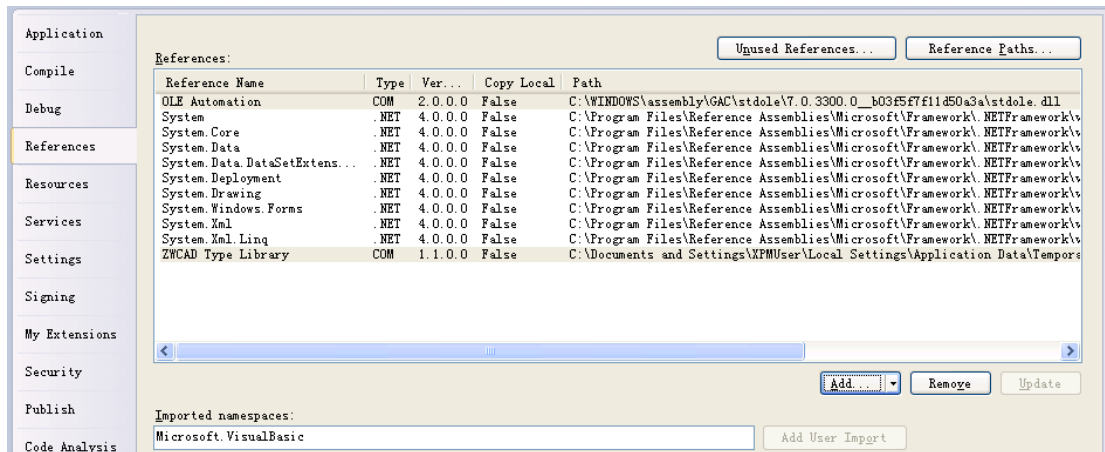
Now, at the **Solution Explorer** window, double click the project's name to go to project properties.



Select the **References** tab and click on **Add** from the project properties, and select **COM**. Add reference to ZWCAD type library, like the image below.



The result should be like in the following image.



We need to import the namespace we want to use. The code inside class1.vb will look like the following code:

`Imports ZWCAD`

Sample code

The following example program is launching ZWCAD application automatically and then creating a line in the drawing.

Steps:

1. Follow the steps above to create a project and add reference. And then add a button control to the Form1.
2. Copy and paste the bellow codes to the Class1.vb file. Overwrite the original code.

`Imports ZWCAD`

`Public Class Form1`

`Private Sub Button1_Click(ByVal sender As System.Object, ByVal e As System.EventArgs)`

`Handles Button1.Click`

```

Dim myDoc As ZcadDocument
Dim ss As ZcadApplication
Dim myspace As ZcadModelSpace
ss = CreateObject("ZWCAD.Application.2025")
myDoc = ss.ActiveDocument
myspace = myDoc.ModelSpace
ss.Visible = True
Dim myline As ZcadLine
Dim startpoint(2) As Double
startpoint(0) = 0 : startpoint(1) = 0 : startpoint(2) = 0
Dim endpoint(2) As Double
endpoint(0) = 10 : endpoint(1) = 200 : endpoint(2) = 0

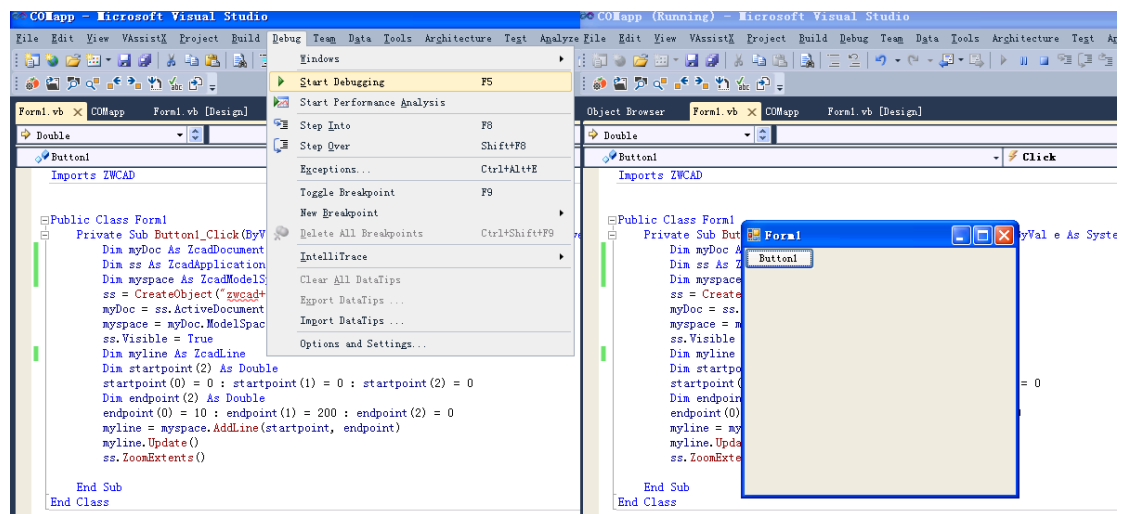
```

```
myline = myspace.AddLine(startpoint, endpoint)
myline.Update()
ss.ZoomExtents()
```

End Sub

End Class

3. Go to menu File, and then select **Debug->Start Debugging** to debug the project.



4. ZWCAD application will be launched after clicking the button on the window.